



SOUTHPORT YACHT CLUB
Gold Coast



Sail Paradise
GOLD COAST - AUSTRALIA
2016

Wednesday 13 - Sunday 17 January 2016
incorporating Coffs to Paradise Yacht Race - 7 January
SOUTHPORT YACHT CLUB - GOLD COAST



SAIL PARADISE 2016

SAILING INSTRUCTIONS

13th to 17th January 2016

CONDUCTED BY SOUTHPORT YACHT CLUB

www.sailparadise.com.au



Mercedes-Benz
Gold Coast



2016 XXXX Sail Paradise – SAILING INSTRUCTIONS

IMPORTANT CONTACTS

Southport Yacht Club

Ph. (07) 55 913 500

Fax. (07) 55 377 131

Race Committee contact:

Mobile: Phone +61 400 558 917 (during the regatta)

Email: sailing.ops@southportyachtclub.com.au

Website: www.southportyachtclub.com.au

Event Website:www.sailparadise.com.au

Office Hours

0900 – 1600 hours daily

First Aid & Emergency Services

VMR Point Danger VMR460,	CH16,67,73,22,81,82	0755 323 417
Seaway Tower VMR403,	CH16,22,67,73,82	0755 912 948
Coast Guard Southport VMR440,	CH16,21,22,67,72,73,74,80,81,82	0755 311 421
VMR Southport VMR400,	CH16,67,73,22,81,82	0755 323 417
RACQ Care Flight	CH16, 73	0755 068 400
Queensland (Gold Coast) Water Police	CH16, 73	0755 095 700

Southport Yacht Club (OA)

Race Committee

Commodore	Phil Short
Vice Commodore Sail	Kerry Noyes
Race Director	Ray McMahon
Principal Race Officer	Louise Davis I.R.O.
Protest Committee Chairperson	Rosemary Collins I.J.
Sailing Operations Manager	Simon Turpin

Protest Committee

Chairperson	Rosemary Collins I.J.
	Ray McMahon
	Simon Turpin

Organising Committee

Commodore	Phil Short
Vice Commodore Sail	Kerry Noyes
Race Director	Ray McMahon
Media Representative	Rob Mundle
General Manager	Brett James
Marketing Manager	Bronwen Hemmings
Sailing Operations Manager	Simon Turpin

Support Staff

General Manager	Brett James
Communications & Marketing	Bronwen Hemmings
Sailing Operations Manager	Simon Turpin
Sailing Administrator	Annie Watson
Administration	Karen Holdway

2016 XXXX Sail Paradise – SAILING INSTRUCTIONS

1 RULES

- 1.1 The regatta will be governed by the rules as defined in the Racing Rules of Sailing (RRS) of the International Sailing Federation and the Prescriptions and Special Regulations (SR) of Yachting Australia (YA).
- 1.2 The Yachting Australia Special Regulations Part 1 – For Racing Boats and Part 2 – Off The Beach Boats (as applicable).
- 1.3 The relevant Class Rules shall apply.
- 1.4 For yachts entered in the IRC Division, the IRC Rules 2015 Parts A, B and C shall apply.
- 1.5 Except as a result of a rating protest, or to correct a rating office error, no changes to an IRC yacht's TCC will be permitted after 1700 hrs 12th January 2016.
- 1.6 Attention is drawn to the RRS Part 1 and especially drawn to **Fundamental Rule 4** which states “The responsibility for a boat’s decision to participate in a race or to continue racing is hers alone”
- 1.7 The Organising Authority may provide sponsors’ logos. These will be adhered to each side of the hull, no more than two metres from the bow, for the duration of the event. Replacement logos may be available at the Sailing Office.
- 1.8 A yacht chartered or on loan may carry national letters or sail numbers in contravention of her class rules. This amends RRS 77.
- 1.9 RRS 50.2 is amended by adding an extra sentence to read “Fixed and retractable spinnaker poles not attached to the foremost of the masts will be permitted for the purpose of setting asymmetrical spinnakers”.
- 1.10 Yachts shall NOT carry anchors protruding beyond the bow whilst racing.
- 1.11 When racing on Courses 1 to 3 only (windward / leeward courses) including Off The Beach Classes, RRS 44.2 is amended in that only “One Turn Penalty” is required except for infringements that occur within the zone.

2 SAFETY

- 2.1 All Yachts (including Off The Beach) shall comply with relevant Safety Category in accordance with NOR 4.1
- 2.2 Yachts with motors shall carry sufficient fuel at the start of each race day for two hours of motoring.
- 2.3 The Race Committee may inspect any yacht at any time for compliance with safety regulations.
- 2.4 Attention is drawn to YA Special Regulation 1.02 – Owner’s Responsibility.
- 2.5 All yachts (excluding Off The Beach Boats) shall SIGN ON before racing each day with the start boat on the relevant VHF Course Channel (74/77) advising # Persons on Board (PoB).
- 2.6 A boat (excluding Off The Beach Dinghies) that retires from a race shall notify the race committee as soon as practical prior to returning through the Gold Coast Seaway.
- 2.7 All Off The Beach Dinghy & Catamaran helmspersons shall SIGN ON, on the sheets provided at SYC Hollywell, prior to going afloat for racing.
- 2.8 All Off The Beach Dinghy & Catamaran helmspersons shall SIGN OFF on the sheets provided at SYC Hollywell within 45 minutes of completing racing for that session.
- 2.9 All yachts (excluding Off The Beach Boats) shall LOG ON and LOG OFF with Seaway Tower on Channel 73 advising # Persons on Board (PoB), Mobile # onboard, Sail # and ETR.
- 2.91 Boats failing to comply with any of these safety items shall be scored DNC without a hearing. This changes rule 63.1, A4 and A5.

3 NOTICES TO COMPETITORS

- 3.1 Notices will be posted on the Official Notice Boards located outside the Sailing Office, Southport Yacht Club, Hollywell & Main Beach.

4 CHANGES TO THE SAILING INSTRUCTIONS

- 4.1 Any changes to the Sailing Instructions will be posted before 0745 hours on the day of the race affected, except that the starting vessel may signal an oral change to sailing instructions on the water by displaying Code Flag "L" and if the change affects Course A or B announcing the change on the relevant VHF Course Channel (74/77).

2016 XXXX Sail Paradise – SAILING INSTRUCTIONS

4.2 Any change to the schedule of races will be posted before 1800 the day before it will take effect.

5 SIGNALS MADE ASHORE

5.1 Signals made ashore will be displayed on the flagstuffs at the Southport Yacht Club, Main Beach & Hollywell.

5.2 A Warning Signal will not be made less than 60 minutes after signal “AP” is removed. This amends RRS Race Signals.

6 CLASSES

6.1 Class flags will be:

Monohull - IRC	Numeral Pennant “1”
Monohull Performance Racing	Numeral Pennant “2”
Monohull Cruising	Numeral Pennant “3”
Monohull Trailable	Numeral Pennant “4”
Multihull Performance Racing	Numeral Pennant “5”
OTBC Div A (YV < 80)	Numeral Pennant “6”
OTBC Div B (YV >80)	Numeral Pennant “7”
Off The Beach Dinghies	Division A (YV < 110) Code Flag A Division B (YV >100) Code Flag B Division C (Juniors) Code Flag O Class Insignia Flags may also be used

6.2 A Class requires at least Five (5) entries. In the event that less than 5 entries are received to form any one division, the Race Committee may determine the disposition of any entries received for that Class, or retain the Class.

6.3 Competitors who enter the Monohull Cruising Class are permitted to only use one (1) Mainsail & one (1) Jib at any one time. No spinnaker, Gennaker, blooper or similar sail shall be used.

2016 XXXX Sail Paradise – SAILING INSTRUCTIONS

7. SCHEDULE OF EVENTS

7.1

DATE	CLASS	EVENT	TIME
Tue 12 th Jan	Skippers Welcome Cocktail Party @ SYC Main Beach		1800hrs
Wed 13 th Jan	Compulsory Briefing at SYC Main Beach		0800hrs
	Monohull IRC & Multihulls	Race 1 – Passage Race	Warning Signal not before 0955hrs
	Monohull Performance Racing	Race 1 – Passage Race	
	Monohull Cruising & Trailable's	Race 1 – Passage Race	
Thu 14 th Jan	Compulsory Briefing at SYC Main Beach		0800hrs
	Monohull IRC & Multihulls	Races 2, 3 and 4 – W/L Course Area "A"	Warning Signal not before 0955hrs
	Monohull Performance Racing	Races 2, 3 and 4 – W/L Course Area "B"	
	Monohull Cruising & Trailable's	Races 2, 3 and 4 – W/L Course Area "B"	
Fri 15 th Jan	Barbeque at Dux Anchorage South Stradbroke Island		1200hrs
Sat 16 th Jan	Compulsory Briefing at SYC Main Beach & SYC Hollywell		0800hrs
	Monohull IRC & Multihulls	Race 5 – Passage Race	Warning Signal not before 0955hrs
	Monohull Performance Racing	Race 5 – Passage Race	
	Monohull Cruising & Trailable's	Race 5 – Passage Race	
	Off The Beach Catamarans	Races 1, 2, 3 and 4 – W/L Course Area "B"	
	Off The Beach Dinghys	Races 1, 2, 3 and 4 – W/L SYC Hollywell - Broadwater	
Compulsory Briefing at SYC Main Beach & SYC Hollywell		0800hrs	
Sun 17 th Jan	Monohull IRC & Multihulls	Race 6 and 7 – W/L Course Area "A"	Warning Signal not before 0955hrs
	Monohull Performance Racing	Races 6 and 7 – W/L Course Area "B"	
	Monohull Cruising & Trailable's	Races 6 and 7 – W/L Course Area "B"	
	Off The Beach Catamarans	Races 5, 6 and 7 – W/L Course Area "B"	
	Off The Beach Dinghys	Races 5, 6, 7 – W/L SYC Hollywell - Broadwater	
	Compulsory Briefing at SYC Main Beach & SYC Hollywell		

2016 XXXX Sail Paradise – SAILING INSTRUCTIONS

Presentation of Prizes – Southport Yacht Club Main Beach

ASAP
after racing

7.2 The Race Committee may re-schedule the races depending on weather forecasts in order to maximise race schedules.

7.3 On the last scheduled day of the regatta no Warning Signal will be made after 1430 hrs.

8 RACING AREA

8.1 Racing for boats excluding Off The Beach Dinghys will be conducted on the waters of the Pacific Ocean off Main Beach. Chart AUS 256 covers that racing area. Monohull IRC & Multihulls will be on Course Area A, Monohull Performance Racing, Cruising, Trailables and Off The Beach Catamarans will be on Course Area B.

Racing for Off The Beach Dinghys will be conducted on the waters of the Broadwater.

9 COURSES

9.1 The course to sail will be selected from those shown in Appendix "A" and will be indicated by a numeral board from the Starting Vessel.

10 MARKS

10.1 Descriptions of marks are detailed in Appendix "A".

10.2 Should a Mark of a "Passage Course" be missing or not be located within 0.1 nautical mile of its co-ordinates, Competitors shall round or pass at the co-ordinates of the mark. This alters RRS34.

10.3 GPS Datum is set to WGS84

11 THE START

11.1 The divisional order of starting will be posted on the Notice Board by 0800 hrs each day.

11.2 In addition to the requirements of RRS 29, the Race Committee MAY call yachts on the designated Course VHF Channel.

11.3 Competitors are reminded that radio recall information is provided as an aid and the provision or failure of the aid shall not form the basis of any protest or redress

11.4 The Starting Line will be between the signal mast displaying an orange flag on the Starting Vessel at the Starboard end and a Port end start pin.

11.5 When more than one race is to be sailed on one day, IC Flag "AP" may be flown on the Starting Vessel between races.

12 TIME LIMITS

12.1 The time limits will be as follows:

- Course Area "A" Courses 1 to 3 120 minutes
- Course Area "B" Courses 1 to 3 70 Minutes
- Passage Races 7 hours or sunset (whichever is the earliest)
- OTB Dinghys 60 Minutes

12.2 Boats still racing when the time limit expires will be scored points equal to the number of boats finishing within the time limit plus a score of 30% of the number of starters rounded to the nearest whole number, but no more points than the number of starters. This changes RRS 35, A4.2 and A5.

13 THE FINISH LINE

13.1 The Finishing Line area will be approximately the same area as the Starting Line.

13.2 The Finish line will be between the signal mast displaying an orange flag on the Finishing Vessel at the Starboard end and the Port end finish pin.

13.3 Finish times will only be allocated to the main sail number or bow number shown as a boat crosses the finish line. If the Sail or bow number is not registered for this event the boat will be scored DNF for this race. This alters RRS A5

2016 XXXX Sail Paradise – SAILING INSTRUCTIONS

14 PROTESTS

- 14.1 Protests and requests for redress and reopening will be lodged at the SYC Reception either Main Beach or Hollywell Sailing Office no later than 90 minutes (30 Minutes for Off The Beach Dinghys) after the finish time for the last finishing yacht in the last race for the day for the protesting yacht's division. Protest forms are available from these locations.
- 14.2 Protests will be heard at SYC Main Beach as soon as practical after the close of protest time. The schedule of hearings will be posted on the official notice boards no later than 45 minutes after the Protest Time Limit has expired.
- 14.3 Breaches of Sailing Instructions 1.9 and 1.11, 2, 17 are protestable by the Race Committee only and will not be grounds for protest by another competitor. (This amends RRS 60.1)
- 14.4 On the last day of the regatta a request for reopening a hearing will be delivered:
- a. Within the protest time limit if the party requesting reopening was informed of the decision on a previous day.
 - b. no later than 30 minutes after the party requesting reopening was informed of the decision on that day. (This amends RRS 66).
- 14.5 On the last scheduled day of racing a request for redress based on a protest committee decision shall be delivered no later than 30 minutes after the decision was posted. This changes RSS 62.2

15 ARBITRATION

- 15.1 The protest committee may offer a short arbitration hearing which may be heard prior to a protest hearing where the protest concerns a rule of Part 2. After the written protest form is properly lodged, one representative from each boat will meet with the arbitrator, no witnesses will be permitted. Protests not resolved by arbitration will be lodged with the Protest Committee.
- 15.2 A boat that accepts fault at an arbitration hearing will be penalised by having her race score increased by 25% of the difference between the boats finishing score and the score for DSQ in her division or class, rounded to the nearest whole number. All other boats scores will remain the same. Once accepted, this decision is not subject to reopening or appeal. This alters RRS 63, 64.1(a), 66 and Appendix A.
- 15.3 The arbitrator may be a member of any subsequent Protest Committee.

16 SCORING & HANDICAPS

- 16.1 The series will be scored as provided in Appendix A of the RRS using the low point scoring system.
- 16.2 One completed race will constitute a series.
- 16.3 A boat's series score will be the total of her race scores.
- 16.4 For Performance Handicaps System (PHS) the handicaps may be adjusted after each race.
- 16.5 Handicaps will be posted on the SYC Website by 2000hrs on Tuesday 12th January 2016. Any changes to PHS will be posted on the SYC Website before 0900hrs on the day they take effect.

16.6

DIVISION	HANDICAP SYSTEM	NO. OF RACES
Monohull IRC	IRC	7
Monohull Performance Racing	PHS	7
Monohull Cruising	PHS	7
Multihull	PHS	7
Off The Beach Catamarans	VYC	7
Off The Beach Dinghy's	VYC	7

2016 XXXX Sail Paradise – SAILING INSTRUCTIONS

17 RADIO

- 17.1 All yachts (Excluding Off The Beach Dinghy's & Catamaran's) shall carry an operational VHF radio at all times during the Regatta.
- 17.2 The VHF Channel for racing on Course Area "A" will be Ch. 74.
- 17.3 The VHF Channel for racing on Course Area "B" will be Ch. 77
- 17.4 The Race Committee may broadcast race information before and during each race. Any such communication will not be deemed as outside help. This Alters RRS 41.

18 TROPHIES AND PRIZES

- 18.1 Trophies and Prizes will be awarded for:
First, Second and Third in each Division, providing there are 5 or more entries.
Divisions with less than 5 entries if not combined with another division will have trophies awarded to first and second place overall.
- 18.2 The overall winner of the IRC Division will be awarded as the perpetual winner of the "Sail Paradise Trophy".
- 18.3 Other prizes may be awarded throughout the regatta.

19 DISCLAIMER OF LIABILITY

- 19.1 Competitors participate in this regatta entirely at their own risk. See RRS 4, Decision to Race. The organising authority sponsors and their servants and volunteers will not accept any liability for material damage or personal injury or death sustained in conjunction with or prior to, during, or after the regatta.

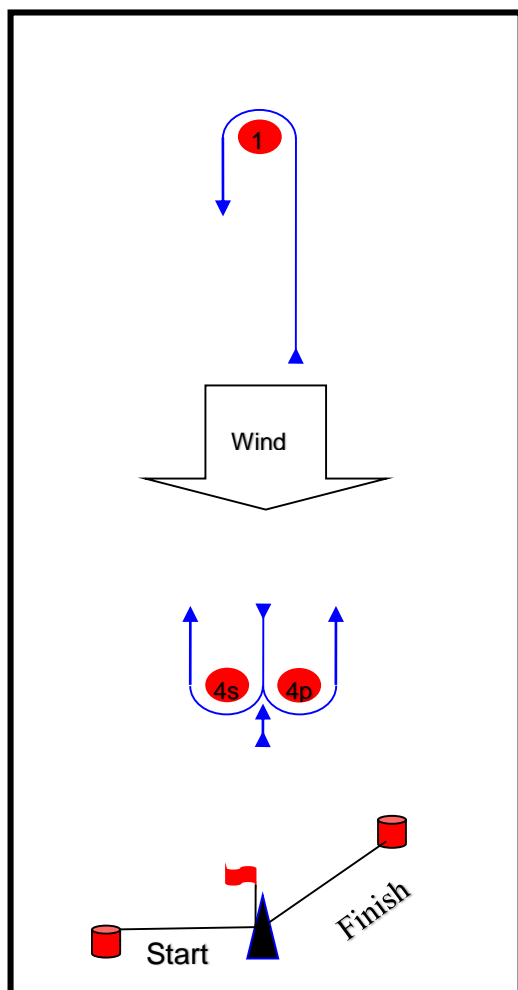
20.0 SPECIAL CONDITIONS FROM MARITIME SAFETY QUEENSLAND

- (i) All participating ships and operators of such ships must comply with the Transport Operations (Marine Safety) Act 1994 (the Act) and subordinate Regulation (the Reg).
- (ii) The International Regulations for the Prevention of Collisions at Sea 1972 (COLREGS) apply to all ships at all times.
- (iii) The racing Rules of Sailing (RRS) will apply only between those ships that are participating in the event, for the duration of the event. Should interaction occur with non-participating ships, the COLREGS shall apply and shall over-ride all other rules
- (iv) In particular, attention is drawn to rule 9 - 'Narrow Channels':- a sailing vessel shall not impede the passage of a vessel which can safely navigate only in a narrow channel or fairway.

2016 XXXX Sail Paradise – SAILING INSTRUCTIONS

APPENDIX A – COURSES & MARKS

Windward Leeward Course (Hollywood Finish style)

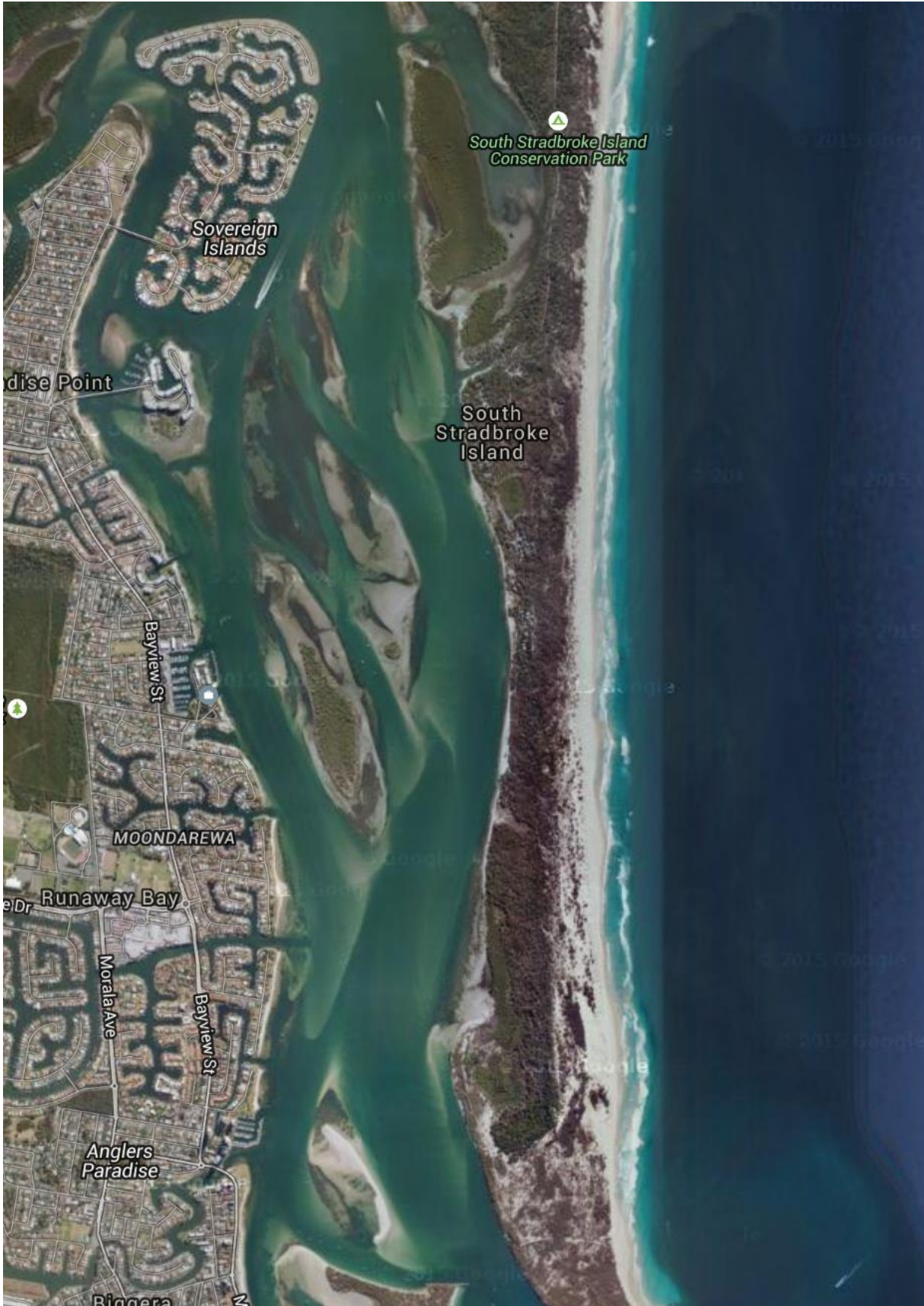


COURSE SIGNAL	COURSE CONFIGURATION
1	Start – 1 – 4p – Finish
2	Start – 1 – 4s/4p – 1 – 4p – Finish
3	Start – 1 – 4s/4p – 1 – 4s/4p – 1 – 4p – Finish

COURSE MARKS	MARK DESCRIPTION
Start Pin Mark	Black & White checked cylindrical buoy
Finish Pin Mark	Pink tear drop Buoy
Mark 1	Large Yellow Cube inflatable buoy
Mark 4s	Orange cylindrical inflatable buoy
Mark 4p	Orange cylindrical inflatable buoy

2016 XXXX Sail Paradise – SAILING INSTRUCTIONS

Off The Beach Dinghy Course Location



2016 XXXX Sail Paradise – SAILING INSTRUCTIONS

APPENDIX A – COURSES & MARKS (Contd.)

PASSAGE RACE COURSES:

Course 4 – Q1 / Currumbin

Course Mark	Mark Description	Required Side
Starting Line	As described in Sailing Instruction 11	
Clearing Mark	Yellow cylinder buoy approx 0.8nm upwind of Start Line	As signalled
Q1 Mark	Yellow cube buoy approx 28°00.850'S, 153° 27.300'E	Port
Currumbin Mark	Yellow cube buoy approx 28°07.300'S, 153° 29.500'E	Port
Q1 Mark	Yellow cube buoy approx 28°00.850'S, 153° 27.300'E	Starboard
Finishing Line	As described in Sailing Instruction 13	

Course 5 – Q1-Burleigh

Course Mark	Mark Description	Required Side
Starting Line	As described in Sailing Instruction 11	
Clearing Mark	Yellow cylinder buoy approx 0.8nm upwind of Start Line	As signalled
Q1 Mark	Yellow cube buoy approx 28°00.850'S, 153° 27.300'E	Port
Burleigh Mark	Yellow cube buoy approx 28° 5.110'S, 153° 27.830'E	Port
Q1 Mark	Yellow buoy approx 28°00.850'S, 153° 27.300'E	Starboard
Finishing Line	As described in Sailing Instruction 13	

Course 6 – Q1-Burleigh Extended

Course Mark	Mark Description	Required Side
Starting Line	As described in Sailing Instruction 11	
Clearing Mark	Yellow cylinder buoy approx 0.8nm upwind of Start Line	As signalled
Q1 Mark	Yellow cube buoy approx 28°00.850'S, 153° 27.300'E	Port
Clearing Mark	Yellow cylinder buoy approx 0.8nm upwind of Start Line	Port
Q1 Mark	Yellow cube buoy approx 28°00.850'S, 153° 27.300'E	Port
Burleigh Mark	Yellow cube buoy approx 28° 5.110'S, 153° 27.830'E	Port
Q1 Mark	Yellow buoy approx 28°00.850'S, 153° 27.300'E	Starboard
Finishing Line	As described in Sailing Instruction 13	

Course 7 – Q1- Currumbin Extended

Course Mark	Mark Description	Required Side
Starting Line	As described in Sailing Instruction 11	
Clearing Mark	Yellow cylinder buoy approx 0.8nm upwind of Start Line	As signalled
Q1 Mark	Yellow cube buoy approx 28°00.850'S, 153° 27.300'E	Port
Clearing Mark	Yellow cylinder buoy approx. 0.8nm upwind of Start Line	Port
Q1 Mark	Yellow cube buoy approx 28°00.850'S, 153° 27.300'E	Port
Currumbin Mark	Yellow cube buoy approx 28° 07.3'S, 153° 29.5'E	Port
Q1 Mark	Yellow buoy approx 28°00.850'S, 153° 27.300'E	Starboard
Finishing Line	As described in Sailing Instruction 13	

NOTE: For all Passage Race Courses a Clearing Mark may be laid as part of the course. The Clearing Mark will be approximately 0.8 mile upwind of the start line. The direction for rounding the Clearing Mark will be indicated by a red flag for port rounding or green flag for starboard rounding hoisted at or before the Warning Signal. If no green or red flag is displayed the Clearing Mark is deleted from the course.