



bartercard



# Sail Paradise

GOLD COAST · AUSTRALIA

incorporating

THE 2018 QUEENSLAND

- Australian Sailing Yachting Championships
- Australian Measurement System (AMS) Championships
- Australian Sports Boat Association (ASBA) Championships

6 - 9 January 2018

[www.pittwatertoparadise.com.au](http://www.pittwatertoparadise.com.au)

[www.sailparadise.com.au](http://www.sailparadise.com.au)

# SAILING INSTRUCTIONS



@Pitt2Paradise  
@SailParadise



#Pitt2Paradise  
#SailParadise



@Pitt2Paradise  
@SouthportYC



CLUB MARINE INSURANCE



# 2018 Bartercard Sail Paradise – SAILING INSTRUCTIONS

## IMPORTANT CONTACTS

### Southport Yacht Club

Ph. (07) 55 913 500

Fax. (07) 55 377 131

Race Committee contact:

Mobile:

Email:

Website:

**Event Website:**

### Office Hours

0900 – 1600 hours daily

Simon Turpin

Phone +61 400 558 917 (during the regatta)

sailing.ops@southportyachtclub.com.au

www.southportyachtclub.com.au

**www.sailparadise.com.au**

### First Aid & Emergency Services

VMR Point Danger VMR460,

CH16,67,73,22,81,82

0755 323 417

Seaway Tower VMR403,

CH16,22,67,73,82

0755 912 948

Coast Guard Southport VMR440,

CH16,21,22,67,72,73,74,80,81,82

0755 311 421

VMR Southport VMR400,

CH16,67,73,22,81,82

0755 323 417

RACQ Care Flight

CH16, 73

0755 068 400

Queensland (Gold Coast) Water Police

CH16, 73

0755 095 700

### Southport Yacht Club (OA)

#### Race Committee

Vice Commodore - Sail

Ray McMahon

Race Director

Denis Thompson

Sailing Operations Manager

Simon Turpin

#### Handicap Committee

Michael Daly

Brendan Mann

Ross Manning

Graham Sherring

#### Protest Committee

Chairperson

Neville Willis

Ray McMahon

Mark Dingley

#### Organising Committee

Commodore

Kerry Noyes

Vice Commodore Sail

Ray McMahon

Committee Member

Phil Short

Sailing Divisional Representative

David Hows

Sailing Divisional Representative

Drew Jones

General Manager

Brett James

Marketing Manager

Bronwen Hemmings

Sailing Operations Manager

Simon Turpin

#### Support Staff

Sailing Officer

Mark Dingley

Sailing Administrator

Annie Watson

Sailing Reception

Karen Holdway

Sailing Bosun

Leo Witte

# 2018 Bartercard Sail Paradise – SAILING INSTRUCTIONS

## CONTENTS

---

1. Rules	4
2. Changes to Racing Rules of Sailing	4
3. Responsibility	5
4. Regatta Office and Notice Board	5
5. Pennants, Bow Numbers, Hull Decals and Identification Numbers	5
6. Signals Made Ashore	5
7. Notice to Competitors	5
8. Compulsory Skippers Briefing	5
9. Schedule of Events	6
10. Division Flags	7
11. Courses and Marks of the Course	7
12. Race Committee Vessels	7
13. The Start	7
14. Recalls	7
15. Alternative Penalties	7
16. Yachting Not Finishing	7
17. The Finish Line	8
18. Time Limits	8
19. Protests	8
20. Mediation	8
21. Handicaps and Scoring	9
22. Safety	9
23. Radio Communication	9
24. Race Results	10
25. Trophies and Prizes	10
26. Disclaimer	10
27. Insurance	10
Course Diagrams	11
APPENDIX "A" - Courses and Mark Descriptions	12
Windward / Leeward Courses	12

---

# 2018 Bartercard Sail Paradise – SAILING INSTRUCTIONS

## 1. RULES & REGULATIONS

- 1.1 The regatta will be governed by the rules as defined in the Racing Rules of Sailing (RRS) of World Sailing (WS),
- 1.2 The Prescriptions and Special Regulations (SR) of Australian Sailing (AS),
- 1.3 The IRC Rule 2017 (parts A, B & C)
- 1.4 The ORC Rating System Rules 2017
- 1.5 The Australian Measurement System (AMS) Rules and Regulations
- 1.6 The Sports Boats Measurement System (SMS) Rules and Regulations
- 1.7 The Rules and Regulations of each One Design Class for which there is an eligible boat entered in the Races
- 1.8 The rules of the Offshore Multihull rating rule (OMR) where applicable.
- 1.9 Boats not racing in a Rating Class shall request permission from the Race Committee to use movable and/or variable ballast for the purpose of increasing stability. Any such request must be accompanied by full details of the system involved, and any such system will be taken into account in establishing the yacht's handicap. Stored power may be used for the operation of movable ballast systems. RRS 51 and 52 are modified to the extent required by this paragraph.
- 1.10 Boats entered in Non-Spinnaker Class shall not carry spinnakers, but may use a spinnaker pole to pole out a headsail. Headsails shall be fully hanked, or attached to the forestay by means of a luff groove device.
- 1.11 Nothing in the Notice of Race or Sailing Instructions relieves a boat of her responsibility under civil law to comply with the International Regulations for Preventing Collisions at Sea or local regulations.
- 1.12 Between sunset and sunrise, when a boat cannot determine with certainty what tack the other boat is on, she shall keep clear of that boat. Competitors are reminded that part of the definition of "room" includes taking into account the existing conditions (including visibility).
- 1.13 The Organising Authority may provide sponsors' logos. These will be adhered to each side of the hull in accordance with the Instructions given at Registration.
- 1.14 The owner and skipper of all boats shall ensure that no entities form unauthorised associations between themselves (and their products or services) and the event (otherwise known as "ambush marketing") or any "hijack signage" is carried out by or on behalf of themselves or their sponsors with reference to the event and that nothing else is done which might undermine the event, the rights of the event sponsor, or any other sponsor or participant in the event.
- 1.15 Before the first race of the championship, all Rating Class boats shall submit to the regatta office a declaration of all the sails carried on board for the duration of the regatta (IRC Rule 21.1.5(d)).
- 1.16 In accordance with rule 42(i), a boat may use her engine whilst racing:
  - (a) if she cannot manoeuvre safely, or
  - (b) is in danger of interfering with commercial traffic or aircraft operations, or
  - (c) has run aground, or
  - (d) is in imminent danger of running aground.
  - (e) The engine use must be logged and a declaration made at the race office as soon as possible after finishing.
  - (f) The Race Committee will decide what penalty (if any) shall apply. This alters rule A5
- 1.17 Boats shall not use boat tracking, photography, or video for commercial purposes without prior written approval of the organising authority.

## 2. CHANGES TO THE RACING RULES OF SAILING

- 2.1 Rule 49.1 shall not apply to Sports Boats if racing in compliance with their respective class rules and it is noted on the Sports Boats SMS certificate that the boat incorporates hiking devices.
- 2.2 RRS 78.2: Valid rating/class certificates shall be submitted at time of entry and must be updated (if any changes) by no later than 1600hrs Friday 5th January 2018.
- 2.3 RRS 41: Whilst racing a boat may retrieve data from any page of the event website or from [www.sailparadise.com.au](http://www.sailparadise.com.au), even if those pages are not publically available
- 2.4 RRS 51: A boat with a moveable ballast or variable ballast (within the meaning of those terms in the SR) may move that ballast for the purpose of changing trim or stability.
- 2.5 RRS 52: Does not apply to the adjustment and operation of sails or the adjustment of moveable appendages on any boat.
- 2.6 RRS 52 is amended to permit powered winches for boats over 14.0m LOA.
- 2.7 RRS 55 is amended adding the following sentence to the rule: 'However, discarding cotton, wool or any

# 2018 Bartercard Sail Paradise – SAILING INSTRUCTIONS

other biodegradable material when setting a sail is permitted.'

- 2.8 RRS 61.3: there is no time limit on protests by the RC or the Protest Committee (PC)

## 3. RESPONSIBILITY

- 3.1 All those taking part in these races do so at their own risk and responsibility. Neither Southport Yacht Club nor any other club or company connected with the organising of these races is responsible for the seaworthiness of a yacht whose entry is accepted, nor for the sufficiency or adequacy of its equipment. Owners shall accept full responsibility for the seaworthiness and safe navigation of their boats and competence of their crews.
- 3.2 Attention is drawn to Fundamental Rule 4, which states "The responsibility for a boat's decision to participate in a race or to continue racing is hers alone".

## 4. REGATTA OFFICE AND NOTICE BOARD

- 4.1 The Regatta Office will be located at the 'Wheelhouse' of SYC Main Beach. The Regatta Notice Board will be located near Reception and available from the official noticeboard on [www.sailparadise.com](http://www.sailparadise.com).

## 5. PENNANTS, BOW NUMBERS, HULL DECALS AND IDENTIFICATION NUMBERS

- 5.1 Pennants, bow numbers and hull decals may be provided by the event sponsors. Bow numbers and hull decals shall be located on both sides of the hull as per detailed measurements provided at Registration. Divisional flags as provided by the OA shall be flown from the backstay at all times whilst racing. Boats failing to comply with this may be protested by the Race Committee only. This alters RRS 60.1, 60.3 and 77.

## 6. SIGNALS MADE ASHORE

- 6.1 Signals made ashore will be displayed from the flag pole on the eastern lawn of SYC Main Beach.
- 6.2 When a signal is displayed over a Division flag, it shall apply to that Division only.
- 6.3 A Warning Signal will not be made less than 60 minutes after signal "AP" is removed. This amends RRS Race Signals.

## 7. NOTICES TO COMPETITORS

- 7.1 Notices to competitors will be posted on the official notice board located at Reception at SYC Main Beach and also on the electronic notice board on the event website.
- 7.2 Any change to Sailing Instructions made ashore will be posted at least one hour before the race affected and the Notice to Competitors will be signalled by the display of Code Flag "L" ashore.
- 7.3 Changes to the Sailing Instructions made afloat will be indicated by the display of Code Flag 3rd Substitute Pennant accompanied by two sound signals. The change will be communicated orally on the designated course VHF channel and/or in writing.

## 8. COMPULSORY SKIPPERS BRIEFINGS

- 8.1 A compulsory skippers briefing will be held in accordance with the Schedule of Events located in the "Boardroom" at SYC Main Beach.

## 2018 Bartercard Sail Paradise – SAILING INSTRUCTIONS

### 9. SCHEDULE OF EVENTS

DATE – 2018	EVENT	TIME
Tue 2 <sup>nd</sup> January	Entries close	1700hrs
Fri 5 <sup>th</sup> January	- Skippers Registration	1300hrs – 1600hrs
Sat 6 <sup>th</sup> January	- Skippers Registration - Compulsory Briefing @SYC Main Beach - Warning Signal - Presentation Daily Results - Skippers Welcome Cocktail Party	0730 - 0845hrs  0900hrs  Not before 1055hrs  Not before 1600hrs  1800 hrs
Sun 7 <sup>th</sup> January	- Compulsory Briefing @SYC Main Beach - Warning Signal - Presentation Daily Results	0800hrs  Not before 0955hrs  Not before 1600hrs
Mon 8 <sup>th</sup> January	- Compulsory Briefing @SYC Main Beach - Warning Signal - Presentation Daily Results	0800hrs  Not before 0955hrs  Not before 1600hrs
Tue 9 <sup>th</sup> January	- Compulsory Briefing @SYC Main Beach - Warning Signal	0800hrs  Not before 0955hrs
	- Presentation @ SYC Main Beach	Not before 1600hrs

The Race Committee may make changes to this schedule at any time. The number of Races for each day will be advised at the Compulsory Briefing each day which will be dependent on weather conditions. **Up to 7 Races per Division** will be scheduled for the Regatta.

# 2018 Bartercard Sail Paradise – SAILING INSTRUCTIONS

## 10. DIVISION FLAGS

Division	Division Flag	Backstay Flag
Monohull IRC	Royal Blue	Royal Blue
Monohull Performance Racing (PHS)	Hot Pink	Hot Pink
<b>Monohull Performance Racing Division 2 (PHS)</b>	<b>White</b>	<b>White</b>
Monohull Cruising – Spinnaker (PHS)	Yellow	Yellow
Monohull Cruising – Non Spinnaker (PHS)	Light Blue	Light Blue
Monohull Australian Measurement System (AMS)	Aqua	Aqua
Multihull Performance Racing (PHS)	Yellow	Yellow
Sports Boats (ASBA)	Aqua	Aqua
Trailable Yachts	Purple	Purple

Boats shall fly the provided backstay flag above any event sponsors pennant whilst racing. It shall be flown from the backstay or conspicuously from the stern for boats without a backstay.

## 11. COURSES AND MARKS OF THE COURSE

- 11.1 See appendix "A" for specific details
- 11.2 Class Course area's will be advised at the Compulsory Skippers Briefing
- 11.3 Should a Mark of a "Passage Course" be missing or not be located within 0.1 nautical mile of its co-ordinates, Competitors shall round or pass at the co-ordinates of the mark. This alters RRS34.
- 11.4 GPS Datum is set to WGS84

## 12. RACE COMMITTEE VESSELS

- 12.1 Race Committee vessels will display the SYC burgee.

## 13. THE START

- 13.1 The Divisional order of starting will be posted on the Notice Board by 0800 hrs each day.
- 13.2 In addition to the requirements of RRS 29, the Race Committee MAY call yachts on the designated Course VHF Channel.
- 13.3 The Starting Line will be between the signal mast displaying an orange flag on the Starting Vessel at the Starboard end and a Port end start pin.
- 13.4 When more than one race is to be sailed on one day, International Pennant "AP" may be flown on the Starting Vessel between races.

**Note:** For Race Committee vessel starts, an inner limit buoy may be laid near the Race Committee vessel approximately on the starting line. Boats shall not pass between this buoy and the Race Committee vessel at any time. A breach of this SI is open to protest by the Race Committee only. This alters RRS 60.1 and 60.3.

## 14. RECALLS

- 14.1 Following a General Recall the new start will be five (5) minutes after the recalled start.
- 14.2 One minute after the recalled start the First Substitute will be lowered, the class flag(s) for the class to be re-started will be hoisted along with the Preparatory Signal. (This changes RRS 29.2 and Race Signals "First Substitute")
- 14.3 Following a General Recall the start(s) for the following class(es) will be delayed accordingly.
- 14.4 In addition to the requirements of RRS 29, the Race Committee MAY call yachts on the designated course VHF channel.

## 15. ALTERNATIVE PENALTIES

- 15.1 For Windward / Leeward Courses the Two-Turns penalty (RRS 44.1) is changed to a One Turn penalty, except for infringements that occur within the zone

# 2018 Bartercard Sail Paradise – SAILING INSTRUCTIONS

## 16. YACHTS NOT FINISHING

- 16.1 Yachts not finishing a race shall inform the Race Control on the appropriate course VHF Channel, or by calling the Sailing Administrator on 0409 065 083.

## 17. THE FINISH LINE

- 17.1 The Finishing Mark for Passage Races will be laid inshore of the Finishing boat.
- 17.2 The Finish line will be between the signal mast displaying an orange flag on the Finishing Vessel at the Starboard end and the Port end finish pin.
- 17.3 Finish times will only be allocated to the main sail number or bow number shown as a boat crosses the finish line. If the Sail or bow number is not registered for this event the boat will be scored DNF for this race. This alters RRS A5.

## 18. TIME LIMITS

- 18.1 The time limits will be as follows:

- (a) Windward / Leeward 2 hours or sunset (whichever is the earliest)
- (b) Passage Races 7 hours or sunset (whichever is the earliest)

- 18.2 A boat still racing when her time limit expires will be scored points equal to the number of boats finishing within the time limit plus 25% of the number of starters in her class or division, rounded to the nearest whole number, but no more points than the number of starters. Such boats will be scored Time Limit Expired (TLE). This changes RRS 35, A4.2 and A5. Prior to the time limit expiring, the race committee may offer the score of TLE to boats still racing that may not make the time limit. This changes rule 28.1, 35, A4.2 and A5.

## 19. PROTESTS

- 19.1 Protests will be heard by a Jury constituted in accordance with RRS Appendix M.
- 19.2 RRS 60.3 (a) (1) is changed by deleting the word "serious".
- 19.3 Protests shall be delivered to the Regatta Office within 1.5 hours after the finish time of the last boat in her class (or in the last race of the day when multiple races are conducted).
- 19.4 Protests will be heard as soon as practicable after racing.
- 19.5 Notification of the details of protest hearings will be placed on the Official Notice Boards as soon as possible to inform competitors where and when there is a hearing in which they are parties to a protest or named as a witness. These notices are deemed to fulfil the requirements of RRS 63.2. Representatives of boats, who are parties to hearings, and their witnesses, are advised to remain on call in the vicinity of the Regatta Office (or such other place as directed by the Jury Secretary).
- 19.6 RRS 66 is changed by adding: "On the last day of racing, a party to the hearing may ask for a reopening no later than 20 minutes after being informed of the decision. If the party was informed of the decision on the previous day it shall ask for a reopening no later than the time limit for protests."
- 19.7 In accordance with RRS 64.1 the Jury may award a disqualification or a scoring penalty which may include no penalty.

## 20. MEDIATION

- 20.1 For protests involving an alleged breach of a rule of RRS Part 2, a short mediation hearing may be held prior to a protest hearing. This changes RRS Part 5, Section B.
- 20.2 After a written protest is lodged, one representative from each boat will meet with the mediator. No witnesses will be permitted at this hearing.
- 20.3 A boat that accepts fault at a mediation hearing will be penalised by having her race score increased by 25% of the difference between the boats finishing score and the score for DSQ in her division or class, rounded to the nearest whole number. All other boats scores will remain the same. Once accepted, this decision is not subject to reopening or appeal. This alters RRS 63, 64.1, 66 and Appendix A.
- 20.4 The acceptance of a mediator's opinion cannot be grounds for redress or reopening. This changes RRS 60.1, 62 and 66.
- 20.5 The mediator may be a member of any subsequent Jury or may give evidence to the Jury.



# 2018 Bartercard Sail Paradise – SAILING INSTRUCTIONS

## 21. HANDICAPS AND SCORING

21.1 The scoring system shall be the Low Point System, RRS Appendix A

21.2 One race must be completed to constitute a series.

21.3 A boat's series score will be the total of her race scores. The handicap system in each Division is as follows:

DIVISION	HANDICAP SYSTEM	UP TO NO. OF RACES
Monohull IRC	IRC	7
Monohull Performance Racing (PHS)	PHS	7
Monohull Cruising – Spinnaker (PHS)	PHS	7
Monohull Cruising – Non Spinnaker (PHS)	PHS	7
Monohull Australian Measurement System (AMS)	AMS	7
Multihull Performance Racing (PHS)	PHS	7
Sports Boats (ASBA)	SMS	7
Trailable Yachts	PHS	7

21.4 Results will be calculated by the application of the appropriate Class multiplier of elapsed time as shown in the table above. The boat with the lowest corrected time (after application of scoring penalties, if any) will be scored first and so on.

21.5 Performance Based Handicap TCF's for each yacht will be determined by the SYC Committee and may be altered at any time. The decision of the Handicap Committee or their representative on any handicap matter will be final and will not be grounds for requests for redress. This alters RRS 60.1 (b).

## 22. SAFETY

22.1 All Classes: The safety regulations will be AS Special Regulations Part 1 for Category 5 races.

22.2 A boat may be inspected at any time for compliance with Special Regulations or Rating Certificate.

22.3 All helmspersons shall "Log-On" with Gold Coast Seaway Tower on VHF73 providing Boat Name, Sail #, Persons On Board (POB), Mobile Number, Vessel Registration Number and Estimate Time of Return (ETR) **prior** to departing the Gold Coast Seaway.

22.4 All helmspersons shall "Sign On" with Race Control **BEFORE** the first Warning Signal on VHF09 advising their Boat Name, Sail # and P.O.B. (Persons On Board). Race Control will confirm their recorded details for confirmation of "Sign On".

22.5 A boat that retires from a race shall notify Race Control as soon as possible. This must be via VHF09 if Race Control is still On Station **OR** by texting mobile phone as advised at the Skippers Briefing advising their exact location and their intentions of travel.

22.6 All helmspersons shall "Log-Off" with Gold Coast Seaway Tower on VHF73 immediately upon safely returning through the Gold Coast Seaway.

22.7 A boat shall NOT carry anchors protruding beyond the bow whilst racing.

22.8 Failure to comply with **any** of these Safety Regulations will result in the boat being scored **DSQ** without a hearing. This changes RRS Rule 63.1, A4 and A5.

## 23. RADIO COMMUNICATION

23.1 The Race Committee may broadcast the course to be sailed, names/sail numbers of OCS boats, and/or other information of interest to competitors on the appropriate course VHF channel. Any such communications by the Race Committee will not be considered as Outside Help, this alters RRS 41. The Race Committee may also transmit course and other information by Short Message Service (SMS).

23.2 Any failure of, or defect in, any such a broadcast will not be grounds for redress. This alters RRS 60.1 and 62

23.3 Course Area "A" VHF Channel 09

23.4 Course Area "B" VHF Channel 77

23.5 Course Area's combined VHF Channel 09

## 2018 Bartercard Sail Paradise – SAILING INSTRUCTIONS

### 24. RACE RESULTS

24.1 Results for each race will be posted on the Regatta Noticeboards as soon as practicable after each race. Copies of result sheets may be available from the Regatta Office.

### 25. TROPHIES AND PRIZES

25.1 Daily prizes will be awarded for 1st, 2nd and 3rd on corrected time in each race for each Division except if there are multiple races held for a Division the day's totalled race scores will determine the winners. Daily Prizes will be presented on the western deck at approximately 1730hrs after racing each day.

25.2 Trophies and Prizes will be awarded for Series Scores, placings 1st, 2nd and 3rd in each Division or Sub-division

25.3 Other prizes may be awarded at the discretion of the Organising Authority.

### 26. DISCLAIMER OF LIABILITY

26.1 Competitors participate in the regatta entirely at their own risk. See rule 4, Decision to Race. The Organising Authority will not accept any liability for material damage or personal injury or death sustained in conjunction with or prior to, during, or after the regatta.

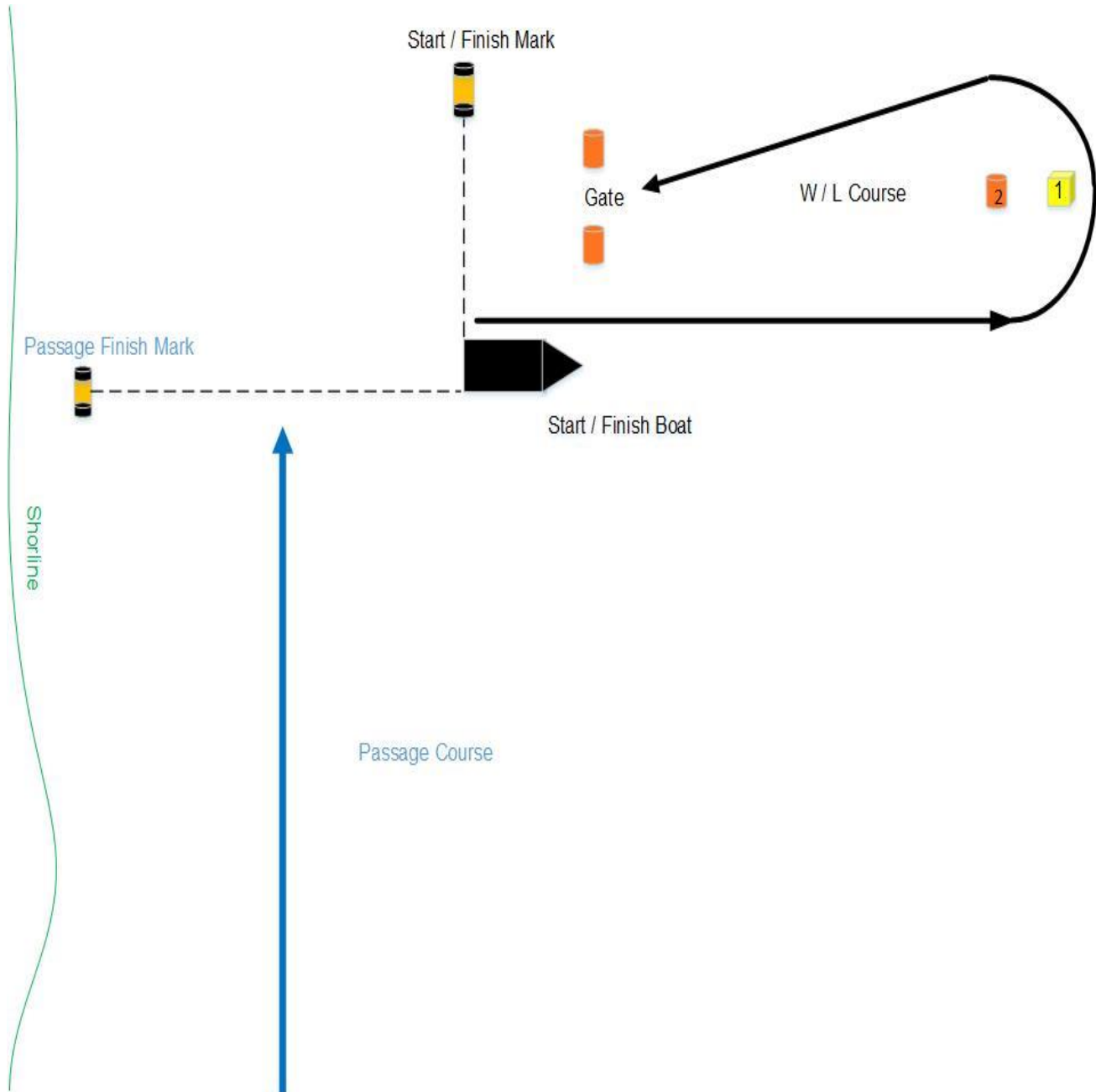
### 27. INSURANCE

27.1 Each participating boat shall be insured with valid third-party liability insurance with a minimum cover of \$10,000,000.00 per incident or the equivalent. Proof of insurance maybe required, clearly indicating the person, the amount and the period of coverage, at registration. All owners/competitors who sign the Entry Form are deemed to have made a declaration that they hold such cover.

# 2018 Bartercard Sail Paradise – SAILING INSTRUCTIONS

## APPENDIX A – COURSES & MARKS

### DESCRIPTIVE COURSE DIAGRAM



## 2018 Bartercard Sail Paradise – SAILING INSTRUCTIONS

### APPENDIX A – COURSES & MARKS (Contd.)

#### MARK DESCRIPTIONS

COURSE MARK	MARK DESCRIPTION
Start / Finish Mark	White cylindrical
Passage Finish Mark	Orange & Black inflatable buoy
Mark 1	Large Yellow inflatable cube
Gate & Mark 2	Orange inflatable buoy

#### WINDWARD / LEEWARD COURSES

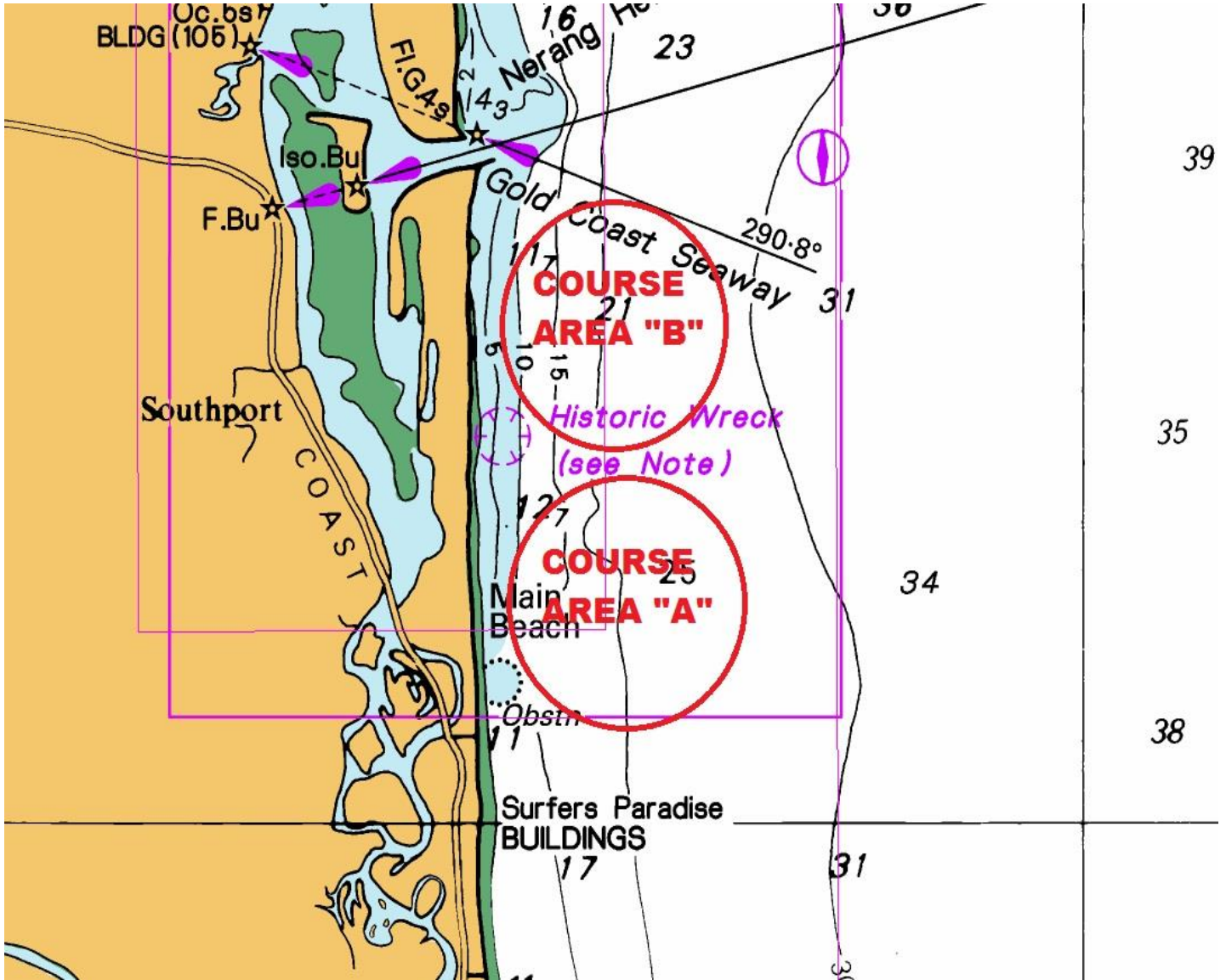
- A 1 The following course descriptions lists the order in which marks are to be passed and the side each mark is to be rounded.
- A 2 The course to be sailed for each class will be signaled by the Course numeral # pennant being displayed on the start / finish boat. The course to be sailed may also be broadcast on the designated course VHF Channel.
- A 3 A board displaying the approximate compass bearing from the start/finish boat to Mark 1 and to Mark 2 will be displayed from the committee vessel.
- A 4 Mark 1 and Mark 2 will be laid to windward of the starting line.  
The Gate will be laid approximately 50 metres to windward of the starting line.  
(Note: The Gate may be laid after the starting signal).
- A 5 All Marks to PORT except the Gate. Either Gate marks may be rounded to port or to starboard after passing through the gate from the direction of the last mark. If only one Gate mark is set, yachts shall round that mark to port.
- A 6 For a change of course direction or length of one leg the Race Committee will move the original mark (or marks or finishing line) or will lay a new mark (or marks) identical to the original at the new position. Any subsequent marks may be relocated to maintain the original course configuration.
- A.7 Mark 2 will not be laid if not required.

COURSE	COURSE CONFIGURATION
1	Start - 1 – Finish
2	Start - 1 - Gate - 1 - Finish
3	Start - 1 - Gate - 1 - Gate - 1 - Finish
4	Start - 2 – Finish
5	Start - 2 - Gate - 2 - Finish
6	Start - 2 - Gate - 2 - Gate - 2 - Finish

# 2018 Bartercard Sail Paradise – SAILING INSTRUCTIONS

## APPENDIX A – COURSES & MARKS (Contd.)

### Windward Leeward Course Locations



## 2018 Bartercard Sail Paradise – SAILING INSTRUCTIONS

### APPENDIX A – COURSES & MARKS (Contd.)

#### PASSAGE RACE COURSES:

##### Course 4 – Q1 / Currumbin

Course Mark	Mark Description	Required Side
Starting Line	As described in Sailing Instruction 11	
Clearing Mark	Yellow cylinder buoy approx 0.8nm upwind of Start Line	As signalled
Q1 Mark	Yellow cube buoy approx 28°00.850'S, 153° 27.300'E	Port
Currumbin Mark	Yellow cube buoy approx 28°07.300'S, 153° 29.500'E	Port
Q1 Mark	Yellow cube buoy approx 28°00.850'S, 153° 27.300'E	Starboard
Finishing Line	As described in Sailing Instruction 17	

##### Course 5 – Q1-Burleigh

Course Mark	Mark Description	Required Side
Starting Line	As described in Sailing Instruction 11	
Clearing Mark	Yellow cylinder buoy approx 0.8nm upwind of Start Line	As signalled
Q1 Mark	Yellow cube buoy approx 28°00.850'S, 153° 27.300'E	Port
Burleigh Mark	Yellow cube buoy approx 28° 5.110'S, 153° 27.830'E	Port
Q1 Mark	Yellow buoy approx 28°00.850'S, 153° 27.300'E	Starboard
Finishing Line	As described in Sailing Instruction 17	

##### Course 6 – Q1-Burleigh Extended

Course Mark	Mark Description	Required Side
Starting Line	As described in Sailing Instruction 11	
Clearing Mark	Yellow cylinder buoy approx 0.8nm upwind of Start Line	As signalled
Q1 Mark	Yellow cube buoy approx 28°00.850'S, 153° 27.300'E	Port
Clearing Mark	Yellow cylinder buoy approx 0.8nm upwind of Start Line	Port
Q1 Mark	Yellow cube buoy approx 28°00.850'S, 153° 27.300'E	Port
Burleigh Mark	Yellow cube buoy approx 28° 5.110'S, 153° 27.830'E	Port
Q1 Mark	Yellow buoy approx 28°00.850'S, 153° 27.300'E	Starboard
Finishing Line	As described in Sailing Instruction 17	

##### Course 7 – Q1- Currumbin Extended

Course Mark	Mark Description	Required Side
Starting Line	As described in Sailing Instruction 11	
Clearing Mark	Yellow cylinder buoy approx 0.8nm upwind of Start Line	As signalled
Q1 Mark	Yellow cube buoy approx 28°00.850'S, 153° 27.300'E	Port
Clearing Mark	Yellow cylinder buoy approx. 0.8nm upwind of Start Line	Port
Q1 Mark	Yellow cube buoy approx 28°00.850'S, 153° 27.300'E	Port
Currumbin Mark	Yellow cube buoy approx 28° 07.3'S, 153° 29.5'E	Port
Q1 Mark	Yellow buoy approx 28°00.850'S, 153° 27.300'E	Starboard
Finishing Line	As described in Sailing Instruction 17	

##### Course 8 – Jumpinpin

Course Mark	Mark Description	Required Side
Starting Line	As described in Sailing Instruction 11	
Clearing Mark	Yellow cylinder buoy approx 0.8nm upwind of Start Line	As signalled
Jumpinpin	Yellow cube buoy approx 27°44.141'S, 153° 29.00'E	Port
Clearing Mark	Yellow cylinder buoy	Port
Q1 Mark	Yellow cube buoy approx 28°00.850'S, 153° 27.300'E	Port
Finishing Line	As described in Sailing Instruction 17	

## 2018 Bartercard Sail Paradise – SAILING INSTRUCTIONS

**NOTE:** For all Passage Race Courses a Clearing Mark may be laid as part of the course. The Clearing Mark will be approximately 0.8 mile upwind of the start line. The direction for rounding the Clearing Mark will be indicated by a red flag for port rounding or green flag for starboard rounding hoisted at or before the Warning Signal. If no green or red flag is displayed the Clearing Mark is deleted from the course.

In accordance with SI 11.3 Should a Mark of a "Passage Course" be missing or not be located within 0.1 nautical mile of its co-ordinates, Competitors shall round or pass at the co-ordinates of the mark. This alters RRS34."