

**ETCHELLS DIVISION  
2017/18 SAILING INSTRUCTIONS**

**Southport Yacht Club Inc.**

*Yachting with the Community since 1946*



**2017/18 Sailing Season**

**ETCHELLS DIVISION**

**SAILING INSTRUCTIONS**

**ETCHELLS DIVISION  
2017/18 SAILING INSTRUCTIONS**

<b>SERIES</b>	
Club Championship Series – Day 1	Saturday 21 <sup>st</sup> October
Club Championship Series – Day 2	Saturday 18 <sup>th</sup> November
Club Championship Series – Day 3	Saturday 2 <sup>nd</sup> December
Club Championship Series – Day 4	Saturday 16 <sup>th</sup> December
Club Championship Series – Day 5	Saturday 10 <sup>th</sup> February
Club Championship Series – Day 6	Saturday 24 <sup>th</sup> February
Club Championship Series – Day 7	Saturday 17 <sup>th</sup> March
Club Championship Series – Day 8	Saturday 28 <sup>th</sup> April
Club Championship Series – Day 9	Saturday 26 <sup>th</sup> May

<b>ETCHELLS CLUB CHAMPIONSHIP</b>	
<b>OFFSHORE SERIES</b>	<b>\$395</b>

# ETCHELLS DIVISION 2017/18 SAILING INSTRUCTIONS

## 2017/2018 SAILING SEASON – POLICY

### CLUB PARTICIPATION RULES

1. Southport Yacht Club (SYC) is a member of Australian Sailing and races are governed by the Racing Rules of Sailing (RRS) of the International Sailing Federation and the Prescriptions and Special Regulations (SR) of Australian Sailing (AS). These may be found at: [www.sailing.org/documents/racingrules/index](http://www.sailing.org/documents/racingrules/index)
2. All participating Boats and Operators must comply with The *Transport Operations (Marine Safety) Act 1994* and its subordinate legislation, the *Marine Safety (Domestic Commercial Vessel) National Law Act 2012* (Cwlth) and its subordinate legislation AND The *International Regulations for the Prevention of Collisions at Sea 1972* (COLREGS).  
The *Racing Rules of Sailing* (RRS) only applies between participating SYC Competitors for the duration of the event. Should interaction occur with non-participating ships, then COLREGS shall apply to all ships and shall over-ride all other rules.
3. Following participation in any three (3) SYC club races, any owner, skipper or crew of a participating Boat is required to become a member, in the appropriate category, of SYC.
4. It is the responsibility of the person in charge of the Boat to ensure that all crew competing on the boat holds a current membership of AS or equivalent membership of a yachting authority recognised by ISAF. In order for you to check AS Numbers and Membership Registration, please visit: <http://www.sailing.org.au/check-my-as-number/> Please also note that you will need the First and Last Name and either the DOB or AS Number in order to validate.
5. The Top Yacht program is used by SYC for its race management software.
6. All members intending to race shall pre-pay and register with a Season Entry or Casual Entry **prior** to racing. Failure to pay the outlined fee and/or register will result in positions not being shown in results. Any member/s who continually race without paying or registering will be referred to The Club Manager for disciplinary action.
7. Only current financial members of the Southport Yacht Club Inc. are eligible for a Season Entry.
8. Average points will be awarded for series entries when Club racing is missed due to: volunteering duties as part of our Race Management Crew for ANY race in ANY Division – you must sign in with the Sailing Office and put that you request Average Points for the day's racing.
9. Average Points may be requested for series entrants while competing at a State, National or International regatta. An application for average points must be completed and returned to the Sailing Office **BEFORE** the missed day's racing. The application form is available on the SYC Website. No application will be considered post missed days racing. These points will be awarded for no more than three races in a series.

### ONSHORE RACE ABANDONMENT

1. Any decision to race, postpone or abandon racing in either light weather or inclement weather, will be made by the Sailing Office in consultation with the Vice Commodore of Sail and the relevant Sailing Committee Divisional Representative.
2. For regular club racing the decision to race, postpone or abandon will not be made before 1000 hours on the day of the race unless circumstances dictate that an earlier decision would be appropriate noting:
  - 2.1 Racing will not be started if there is a current Gale (or higher), Tsunami or other severe weather warning that will impact the race area(s).
  - 2.2 Racing may not be started if there is a current Severe Thunderstorm Warning that will impact the race area(s)
  - 2.3 Racing may not be started if there is a Strong Wind Warning in the race area(s).
  - 2.4 For regular club racing the decision to postpone or abandon a race due to light weather will only be made within 60 minutes of the first starting signal.

## ETCHELLS DIVISION 2017/18 SAILING INSTRUCTIONS

- 2.5 Races will only be abandoned after careful consideration of all weather conditions and their likely impact on the race area(s).
3. A decision to race on any given day does not relieve any competitor of his/her obligation under RRS Fundamental Rule 4.
4. Abandoned Races will not be resailed.

### SAILING COMMITTEE, RACE COMMITTEE & PROTEST COMMITTEE

1. The Vice Commodore Sail shall recommend the appointment prior to the start of each season, a Sailing Committee which shall include at least one member nominated by each of the divisions sailing in the Club and the Sailing Operations Manager.
2. The Vice Commodore Sail shall be Chairman of the Sailing Committee and shall record such decisions and recommendations as passed by a simple majority present at Sailing Committee meetings. Sailing Committee decisions shall be reported to the Board.
3. Quorum for the Sailing Committee shall consist of five members.
4. Quorum for Race & Protest Committee's shall consist of three members.
5. The Sailing Committee shall: determine the sailing programme for the forthcoming season; determine such sailing rules and instructions as are necessary for the conduct of races within the Club; be responsible for conducting point score, championship and special events within the Club and any other sailing event that the Board decides upon from time to time to conduct; and meet at least once a month.
6. Between meetings of the Sailing Committee, the Sailing Officers shall have power to deal with any emergency. Any action taken under this provision shall be reported to the next meeting of the Sailing Committee.
7. **The Race Committee** shall include the Divisional Representative, the Vice Commodore Sail, a Sailing Officer from the Sailing Office and the RO; or their nominated deputy.
8. **All decisions relating to sailing events shall be deliberated by the Race Committee.**
9. A Protest Committee shall be appointed by the Sailing Office for each hearing session as required.
10. Protest Hearings & Requests for Redress for all club racing (excluding Special Events) will be held on the first Monday of each month at Hollywell from 6pm. Protests will be heard in order of receipt and Parties will be notified of the schedule by email no later than the Friday prior to the Hearing.

### DUE PROCESS and HANDICAPS

SYC utilises a democratic *due process* in relation to pertinent Sailing matters that effect our Sailing Community. This *due process* incorporates the Divisional Representatives of The Sailing Committee, the Vice Commodore of Sail and the Sailing Office.

The Top Yacht program is used by SYC for its race management software. The following handicap system is used for the Etchell Division:

- Performance Handicap System (PHS)

Please contact the Sailing Office or your Sailing Committee Divisional Representative for further detailed information in relation to handicaps. Prior to the commencement of all races, Competitor handicaps will be advertised on the SYC website.

### **Existing Boats**

At the start of the new season, all PHS will be reviewed based on the performance during the past similar series. If the fleet is altered with additional or loss of a significant amount of vessel/s then a new baseline may need to be set. This review will occur prior to the start of the new series and the new PHS and reasons for the amendment will be available at the SYC Sailing Office on request.

# ETCHELLS DIVISION 2017/18 SAILING INSTRUCTIONS

## ***Conditions for all Boats***

PHS may be amended if the boat is modified. In accordance with Sailing Instructions, any modifications need to be provided in writing to the SYC Sailing Office 48 hours prior to racing. If such modifications are deemed to be significant, the boat will be assessed and entered as a new boat. Previous results will not be combined in the Series results.

Notification of change of Helmsperson from that on the nomination form for a Series/Regatta must be made in writing to the SYC Sailing Office. Failure to comply with the above conditions will result in a PHS adjustment. The SYC Divisional Race Committee will review all results during the following week and if on review the Sailing Committee finds that the PHS falls outside the mathematical constraints of the Top Yacht Program, then a manual adjustment will be made. If such an adjustment occurs, the value and the reasons will be available at the SYC Sailing Office on request. The Vice Commodore of Sail, Divisional Sailing Committee Representative and Sailing Office shall confirm all manual adjustments and the Sailing Office will issue a brief reason for the adjustment containing the series and the date of the change.

## ***New Vessels***

A starting PHS and division allocation will be made on submission of a new vessel's details, as per Vessel Registration form. This starting PHS will be reviewed to confirm that the first PHS is appropriate to allow the TopYacht Program to make the automatic adjustment within its mathematical constraints. If for some reason the PHS fails to be adjusted appropriately, then a manual adjustment may be made.

## ***Handicap Review***

Any Competitor may make an application in writing to the Sailing Office to have their Handicap reviewed without prejudice. In their submission, the Competitor must provide detailed reasons and appropriate calculations to validate their request. The Sailing Office will forward their request to the relevant Sailing Committee Divisional Representative and the Divisional Race Committee for their recommendations. Upon receipt of these recommendations, the Vice Commodore of Sail, Sailing Committee Divisional Representative and Sailing Office may then approve or decline the adjustment and the Sailing Office will issue a brief reason by email containing the series and the date of the amendment or declination.

# ETCHELLS DIVISION 2017/18 SAILING INSTRUCTIONS

## SAILING COMMITTEE DIVISIONAL REPRESENTATIVES:

### ED – Etchell Division:

Scott McNally 0409 069 197 [cracka\\_sm@bigpond.com](mailto:cracka_sm@bigpond.com)

### OD – Offshore Division:

David Hows 0431 521 925 david@consultants.digital

### TT – Thursday Twilight Division:

Drew Jones 0413 753 926 cajones0306@gmail.com

### ID – Inshore Division:

Ross Manning 0408 195 935 fullgoatracing@hotmail.com

### SB – Sports Boat Division

Graham Sherring 0400 379102 gsherring@evolutionaust.com.au

### OTBC – Off the Beach Catamaran Division:

Jenni Dickson 0409 559 649 jenni-yachts@hotmail.com

### OTBD – Off the Beach Dinghy Division:

Leigh Lomas 0435 802 321 leighlomas@outlook.com

## HANDICAP COMMITTEE:

Sean Allardice; Gary Green; Graham Sherring; Ross Manning

# ETCHELLS DIVISION 2017/18 SAILING INSTRUCTIONS

## CODE OF CONDUCT SOUTHPORT YACHT CLUB

A person accepts responsibility by becoming a member of Southport Yacht Club and agrees to the consequences of any breach of the code of conduct. These may include: -

- Suspension or termination from the club.
- And/or legal proceedings – civil or criminal for conduct unlawful under State or Federal Law.

### KEY PRINCIPLES

Membership of Southport Yacht Club is a privilege that must be safeguarded by the following principles:

Southport Yacht Club seeks to operate in an environment where people show respect for others and their property. Respect is defined as consideration for the well-being of another's body, emotions and possessions, to ensure no damage or deprivation is caused to any of them.

Southport Yacht Club seeks to operate in an environment, which is free from harassment. Harassment is defined as any action directed at an individual or group, which creates a hostile, intimidating or offensive environment.

Southport Yacht Club seeks to operate in a non-discriminatory environment. By this it is meant that where everyone has an equal opportunity and receives a fair go in accordance with the law as well as the Club Rules, By-Laws, procedures and guidelines.

### UNSUITABLE BEHAVIOUR

- Not knowingly discriminate against, abuse, harass, ridicule or embarrass anyone covered by this Code of Conduct.
- Be fair, considerate and honest in all dealings with others.
- Treat all persons with respect, dignity and properly regard their rights and obligations.
- Respect the privacy of other persons.
- Refrain from any form of victimisation towards others.
- Must not use offensive language to any member, visitor attending Southport Yacht Club or any of their events. Must not 'sledge' (as in denigrate and/or intimidate) other persons.
- Excessive use of alcohol, acting in a way that becomes a public nuisance or creates a public disturbance is prohibited.
- Liquor Licensing Laws will be followed at all times.
- Persons under the age of eighteen shall not be permitted to purchase or be supplied tobacco from the cigarette vending machine and shall not be permitted to be served or receive alcohol.
- A member will obey lawful directions from a club employee.
- A member will take responsibility for their guests at all times.
- A member will abide by the dress code of the club.
- A member shall not represent the club in any dealings, unless authorised by the club.
- A member shall not tarnish the reputation of the club, officers, Directors, committees, employees, management or bring it into disrepute.
- The use or encouragement of illegal drugs within the premises of Southport Yacht Club is prohibited.
- Assault, or acting with aggression toward any other person is prohibited.

The Club intends to set the highest standards of excellence by displaying values of:

- Equality – demonstrate awareness of individual rights, opinions and beliefs.

## ETCHELLS DIVISION 2017/18 SAILING INSTRUCTIONS

- Demonstrate reliability and be a dependable Club member in all aspects of the club's environment.
- Respect and courtesy must be shown at all times to all Club officials, members and patrons.
- No prejudicial behaviour is to occur.
- Display maturity and demonstrate acceptable social behaviour while at the club or attending any of the club's events.
- Abide by the rules of the Constitution and the By-Laws.
- Be mindful of your actions in relation to individual safety and safety of all others involved in the club.
- Conduct themselves in a proper manner to the complete satisfaction of Southport Yacht Club and its members, so as not to bring themselves into public disrepute or censure.
- Not disclose to any unauthorised person or organisation information that is of a confidential or privileged nature concerning Southport Yacht Club. Not promote, or pass on, exchange or publish information whereby that information may be of a confidential, offensive, scandalous, unsubstantiated or derisive type;
- Understand the possible consequences of breaching Southport Yacht Club's rules and regulations.

### **CHILDREN**

Parent and guardians at all times shall be responsible for the behaviour of their children on club premises, including the beach, marina and carparks. Parents and guardians of children whose behaviour is socially unacceptable shall be requested to remove them from club's premises.

### **COMPLIANCE**

Any alleged breach of the above principles are to be reported to the General Manager for action. The General Manager will determine if there has been a breach and may warn or initiate disciplinary action against the relevant member. Any disciplinary action under the Charter will be in accordance with the Constitution and laws applying to the club.

This code is to be read in conjunction with the Articles, Rules, Constitution and By-laws of the club.

**YOU ARE REMINDED THAT THE PURPOSE OF THIS CODE IS TO PROVIDE YOU WITH  
A SAFE AND ENJOYABLE ENVIRONMENT**





# ETCHELLS DIVISION 2017/18 SAILING INSTRUCTIONS

## RACING

A minimum of five (5) participants are required to constitute the first race of each race day and a minimum of three (3) participants for races thereafter. If there are less than the required amount the races may be abandoned.

### 1. RULES

- 1.1 The races will be governed by the current rules as defined in the Racing Rules of Sailing (RRS)
- 1.2 The Etchells Class Rules, except as any of these are altered by the Sailing Instructions
- 1.3 Advertising will be permitted in accordance with RRS 80.
- 1.4 The *International Regulations for the Prevention of Collisions at Sea 1972* \ (COLREGS) shall apply at all times. The *Racing Rules of Sailing* (RRS) will apply only between those ships that are participating in the event, for the duration of the event. Should interaction occur with non-participating ships, then COLREGS shall apply to all ships and shall override all other rules. This is a condition imposed by Gold Coast Waterways Authority within our Aquatic Event Authority.

### 2. NOTICES TO COMPETITORS

Notices to competitors will be posted on the official Notice Board located on the Southern Wall of Southport Yacht Club Inc. Hollywell Sailing Squadron

### 3. CHANGES TO SAILING INSTRUCTIONS

Changes to Sailing Instructions will be posted on the official Notice Board and will be emailed to competitors not less than ninety (90) minutes before the scheduled start time of the first race of the day, except that any change to the schedule of races will be posted by 1800 hours on the day before it will take effect.

### 4. SIGNALS MADE ASHORE

- 4.1 Signals made ashore will be displayed on the official flag located on the SYC Hollywell Race Control Tower.
- 4.2 When flag AP is displayed ashore, '1 minute' is replaced with 'not less than 60 minutes' in the race signal AP.
- 4.3 When a visual signal is displayed over a course flag or class flag, it applies to that course area/class only.

### 5. SCHEDULE OF RACES

- 5.1 The schedule of Race Days is as per Table on Page 2. Up to 3 Races per Day may be sailed.
- 5.2 A Compulsory Skippers Briefing will be held at SYC Hollywell at 10am.
- 5.3 The first warning signal for racing covered by these sailing instructions shall be not before 11.55 hours

### 6. CLASS FLAGS

FLEET	FLAG
Etchells	Etchells Class Flag

# ETCHELLS DIVISION 2017/18 SAILING INSTRUCTIONS

## 7. RACING AREA

Attachment B shows the approximate location of our racing area.

## 8. THE COURSES

8.1 The diagram in Attachment D shows the courses to be sailed for the Etchells Series, including the order in which marks are to be passed, and the side on which each mark is to be left.

## 9. MARKS

- 9.1 All vessels competing are to maintain a minimum distance of 3 meters from any navigation marker. Any vessel involved in a marine incident, which includes a collision with an aid to navigation must report the incident in the official format.
- 9.2 Marks, including start and finish marks, are described in Attachment C – SYC DESIGNATED MARKS.

## 10. AREAS THAT ARE OBSTRUCTIONS

The start and finish line, and its extensions, is an obstruction, unless finishing. Boats crossing the finish line incorrectly will be scored DNF without a hearing.

## 11. THE START

- 11.1 The starting line will be between a staff displaying an orange flag on the start vessel at the starboard end and the course side of the port-end starting mark.
- 11.2 A boat starting later than four (4) minutes after her starting signal will be scored Did Not Start (DNS) without a hearing. This changes rule A4.

## 12. CHANGE OF THE NEXT LEG OF THE COURSE

To change the next leg of the course, the race committee will move the original mark (or the finishing line) to a new position.

## 13. SHORTENED COURSE

All courses may be shortened in accordance with RRS. All courses may be shortened at any mark.

## 14. THE FINISH

The finishing line will be between a staff displaying a blue flag on the finishing boat and the finishing mark.

## 15. PENALTY SYSTEM

15.1 The penalty for breaking a rule of Part 2 shall be a One-Turn Penalty (one tack and one gybe in the same direction) except for infringements occurring within the Zone, as defined in the RRS, shall be a Two-Turns Penalty (two tacks and two gybes in the same direction. This changes RRS 44.1 and 44.2. 13.2

## 16. TARGET TIMES

16.1 The target time from the first boat will be 50 minutes.

# ETCHELLS DIVISION

## 2017/18 SAILING INSTRUCTIONS

### 17. TIME LIMITS

- 17.1 The time limit for the first boat will be 80 minutes.
- 17.2 Boats failing to finish within 20 minutes after the first boat sails the course and finishes will be scored Did Not Finish (DNF) without a hearing. This changes rules 35, A4 and A5.

### 18. PROTESTS AND REQUESTS FOR REDRESS

- 18.1 Protest forms are available at the Sailing Office at the Hollywell Sailing Squadron. Protests shall be delivered there within the Protest Time Limit.
- 18.2 The Protest Time Limit is 90 minutes after the last boat has finished in your division. The same protest time limit applies to all protests by the Race Committee and Protest Committee and to request for redress. This changes Rules 61.3 and 62.2.
- 18.3 Notices will be posted according to the 2017/2018 Sailing Season Policy.
- 18.4 Decisions by the Race Committee or Protest Committee will be emailed to parties to the hearing under Rule 65.1.

### 19. SCORING

- 19.1 The low points scoring system of RRS Appendix A9 will apply.
- 19.2 For a Boat that Did not Finish (DNF) they shall be scored the number of boats that have signed on for the Race plus 1 point. This Changes RRS Appendix A4.2
- 19.3 For a Boat that Did not Start (DNS) they shall be scored the number of boats that have signed on for the Race plus 2 points. This Changes RRS Appendix A4.2
- 19.4 For a boat that Did not Compete (DNC) they shall be scored the number of boats that have signed on for the Race plus 3 points. This Changes RRS Appendix A4.2
- 19.5 Four races are required to constitute a series. When fewer than nine (9) races have been completed, all scores shall count.
- 19.6 When nine (9) to eighteen (18) races have been completed a boat's series score will be the total of her race scores excluding her worst three (3) scores.
- 19.7 When eighteen (18) or more races have been completed a boat's series score will be the total of her race scores excluding her six (6) worst scores.

### 20. SAFETY REGULATIONS

- 20.1 All helmspersons shall "Log-On" with Gold Coast Seaway Tower on VHF73 providing Boat Name, Sail #, Persons On Board (POB), Mobile Number, Vessel Registration Number and Estimate Time of Return (ETR) prior to departing the Gold Coast Seaway.
- 20.2 All helmspersons shall "Sign On" with Race Control BEFORE the first Warning Signal on VHF09 advising their Boat Name, Sail # and P.O.B. (Persons On Board). Race Control will confirm their recorded details for confirmation of "Sign On".
- 20.3 A boat that retires from a race shall notify Race Control as soon as possible.
- 20.4 All helmspersons shall "Log-Off" with Gold Coast Seaway Tower on VHF73 immediately upon safely returning through the Gold Coast Seaway.
- 20.5 All crew shall wear a visible life jacket, as per AS SR Part 1 Section 5.
- 20.6 Failure to comply with any of these Safety Regulations will result in the boat being scored DSQ without a hearing. This changes RRS Rule 63.1, A4 and A5.
- 20.7 Competitors must provide a clearly identifiable sail number on their mainsail as noted on TES. A failure to carry clearly distinguishable sail numbers may result in a yacht being scored as DNS without a hearing. This shall not provide grounds for redress.

# ETCHELLS DIVISION 2017/18 SAILING INSTRUCTIONS

## 21. EQUIPMENT AND MEASUREMENT CHECKS

A boat or equipment may be inspected at any time for compliance with the class rules and Sailing Instructions. On the water, a boat can be instructed by a race committee equipment inspector or measurer to proceed immediately to a designated area for inspection.

## 22. OFFICIAL BOATS

22.1 Official boats will be marked with the SYC Burgee.

## 23. RUBBISH DISPOSAL

Boats shall not put rubbish in the water. Rubbish may be placed aboard support and race committee boats.

## 24. PRIZES

### RACE PRIZES

1.1 The Skipper or a crew member of the boat must be present at Race Presentation after each race in order to receive prizes. Failure to be present will entitle the next placing to receive the prizes.

24.1 Other prizes may be awarded at the discretion of the Organising Authority.

### PERPETUAL PRIZES

24.2 The 2017/18 Sailing Presentation for Etchell Championship Racing will take place in the Southport Yacht Club Main Beach.

24.3 Only SEASON ENTRIES are eligible for Sailing Season prizes.

24.4 Winner of the Championship Series is NOT eligible to win the PHS Championship Series.

24.5 Other prizes may be awarded at the discretion of the Organising

24.6 To qualify for these trophies the skipper/owner must be a current financial member of SYC and their yacht registered with SYC.

## 25. MEDIA RIGHTS

In participating in the Etchell Division Club Racing for 2017/2018, a competitor grants to the Organising Authority and the sponsors, the right in perpetuity, to make, reproduce, edit, use and show, from time to time and at their discretion, any motion pictures, still pictures and live, taped or film television and other reproductions of him/ her taken during the 2017/2018 Sailing Season and to use his / her likeness, voice, name and any other information in any material related without compensation.

## 26. DISCLAIMER OF LIABILITY

26.1 All those taking part in races conducted by Southport Yacht Club do so at their own risk and responsibility.

26.2 The Southport Yacht Club, any sponsor and any party involved in the organisation of any event disclaims any and every responsibility for any loss, damage, injury to persons and/or things, both ashore and at sea, as a consequence of participation in any way in the races covered by these sailing instructions.

26.3 Attention is drawn to RRS 4 which states: "The responsibility for a boat's decision to participate in a race or to continue racing is hers alone."

# ETCHELLS DIVISION 2017/18 SAILING INSTRUCTIONS

## 27. INSURANCE

Each participating boat shall be insured with valid third-party liability insurance, with a minimum cover of \$10 million for any one incident. By taking part in a race all boat owners are deemed to have made a declaration that they have such cover.

## 28. RESULTS

Results will be posted on the Southport Yacht Club website on the dedicated results section of the Southport Yacht Club's website as well as on the Etchell Division page.

## 29. FURTHER INFORMATION

Should you require any further information, please do not hesitate to contact:

### ED – Etchells Division:

Scott McInally

Mobile: 0409 069 197

[cracka\\_sm@bigpond.com](mailto:cracka_sm@bigpond.com)

Southport Yacht Club Inc.

1 Marina Crescent, HOLLYWELL QLD 4216.

Phone: (07) 5537 7030.

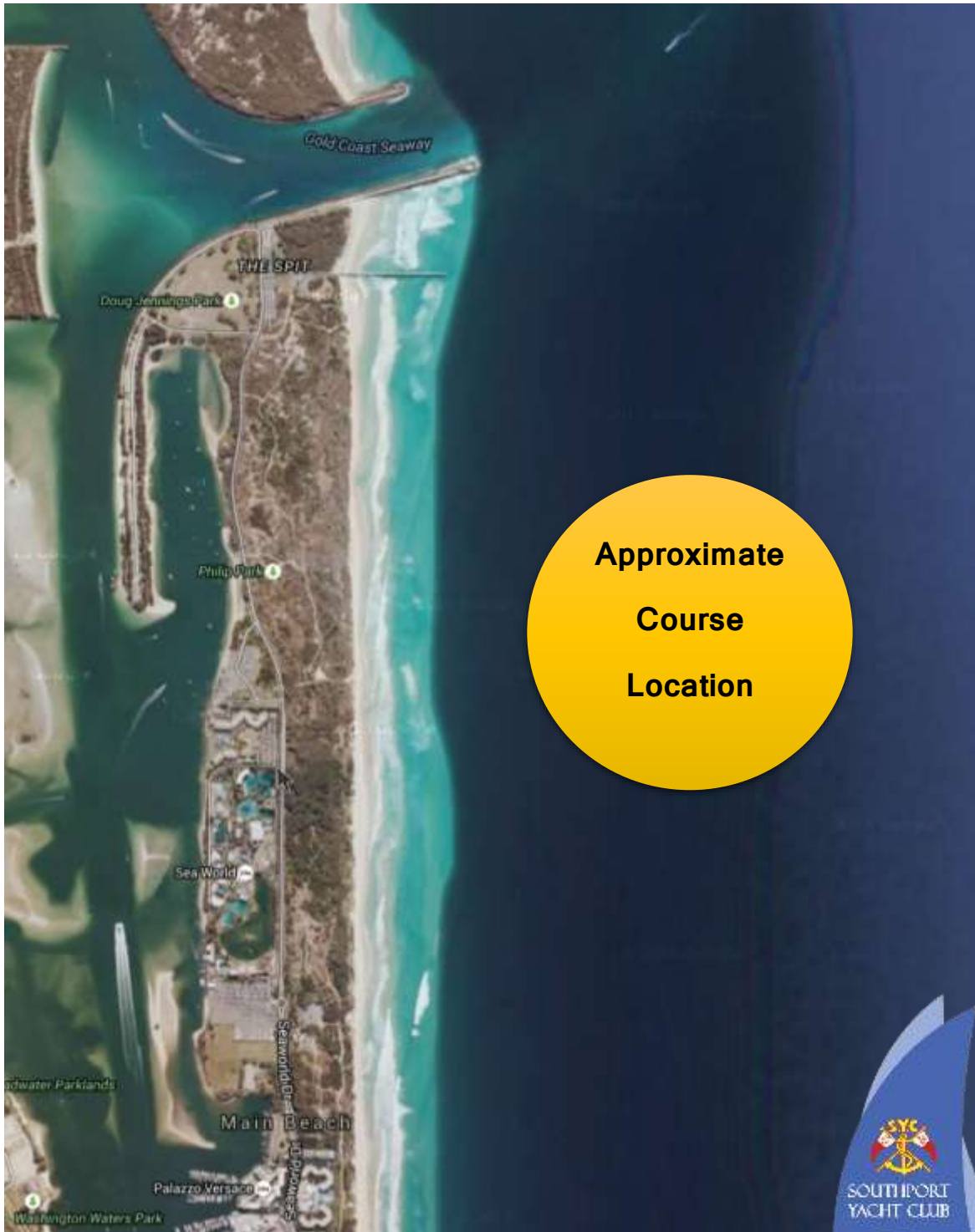
Mobile: 0400 558 917.

Email: [sailing.ops@southportyachtclub.com.au](mailto:sailing.ops@southportyachtclub.com.au)



**ETCHELLS DIVISION  
2017/18 SAILING INSTRUCTIONS**

**ATTACHMENT B  
COURSE LOCATION**



**Approximate  
Course  
Location**



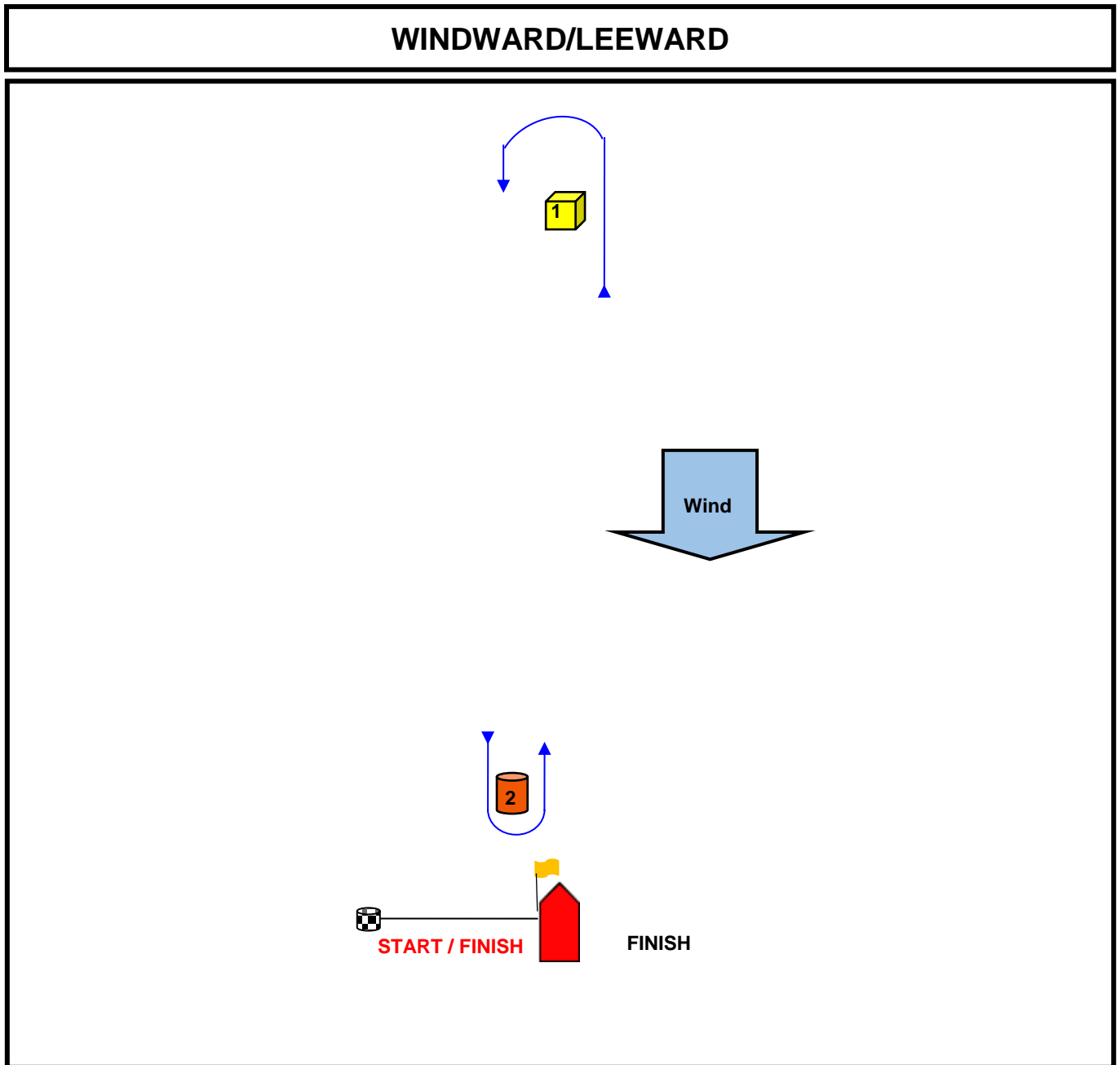
**ETCHELLS DIVISION  
2017/18 SAILING INSTRUCTIONS**

**ATTACHMENT C – SYC DESIGNATED MARKS**

<b>BUOY</b>	<b>DESCRIPTION</b>
<b>START /FINISH</b>	Black and White Chequered Inflatable cylinder
<b>1</b>	Orange Inflatable cone (may be replaced with Yalow Cube when sailing course with Offshore Division)
<b>2</b>	Orange inflatable cone
<b>Barging Buoy</b>	Pink teardrop

**ETCHELLS DIVISION  
2017/18 SAILING INSTRUCTIONS**

**ATTACHMENT D – COURSE DIAGRAMS**



COURSE	MARK ROUNDINGS	TYPE
<b>W1</b>	START – 1 - FINISH	RTC
<b>W2</b>	<b>START – 1 – 2 – 1 - FINISH</b>	<b>RTC</b>
<b>W3</b>	START – 1 – 2 – 1 – 2 – 1 - FINISH	RTC
Mark 1 may be replaced with a Yellow Cube when sharing the course with the Offshore Division		